

## Guide Specifications (Short Form)

### DIVISION 4 - MASONRY SPECIFICATION SECTION 04700 Simulated Masonry Interactive Form available online through [www.coronado.com](http://www.coronado.com)

#### PART 1 GENERAL

##### 1.1 SUMMARY DESCRIPTION

- A. Manufactured Stone Masonry
  - 1. Manufactured Lightweight Stone Veneers - Section 04730
  - 2. Manufactured Thin Brick and Veneer
  - 3. Cast Stone - Section 04720

##### 1.2 Related Sections

- A. Thin Brick Masonry - Section 04710
- B. Veneer - Section 04245

##### 1.3 SUBMITTALS

- A. Submit in accordance with Division 1, Section 01300
  - 1. Product Data: Submit for fabricated wire reinforcement and each type of stone
  - 2. Samples: Submit full size samples for verification of colors and textures
  - 3. Manufacturer's detailed installation instructions
  - 4. Installer and Manufacturer's list of projects of like type and size
  - 5. Qualification reports for those required certifications listed under section 1.5

##### 1.4 FIELD SAMPLES

- A. When required by Architect: Mock up size should be a minimum of 3'x4'

##### 1.5 QUALITY ASSURANCE

- A. Installer: Minimum 5 years experience in similar types of work of similar scope and be able to furnish list of previous jobs and references
- B. Fabricator: Manufacturer to have not less than 5 years experience in manufactured veneer stone similar to type specified and 5 million square feet installed
- C. Expansion Joints: Provide expansion joints as indicated on drawings, or confirm with architect if not indicated
- D. Certifications: Must meet the minimum requirements for adhered, pre-cast veneer stone as set forth under the following:
  - 1. International Building Code 2006
  - 2. International Residential Code 2006
  - 3. 2006 UBC Uniform Building Code
  - 4. Provide documentation that the stone products comply with specified minimum criteria as set forth in the specification

##### 1.6 PROJECT CONDITIONS

- A. Environmental Requirements: Minimum air temperature of 40° F prior to, during, and for 48 hours after completion of work

##### 1.7 DELIVERY AND STORAGE

- A. Deliver, store, handle, and protect materials in accordance with Section 01600
  - 1. Store stone in dry place above 40° F

##### 1.8 WARRANTY

- A. Special Warranty: Prepare and submit in accordance with Section 01780
- B. Provide 50 year warranty against manufacturing defects in manufactured stone products

#### PART 2 PRODUCTS

##### 2.1 ACCEPTABLE MANUFACTURERS

- A. Coronado Stone Products:
- B. Substitutions: Submit in accordance with Section 01600.
- C. Must meet or exceed testing standards below Sections 2.2(2)
- D. Show proof of ICBO or tests in compliance with certifications of Quality Assurance section.

##### 2.2 STONE MATERIALS

- A. General
  - 1. Coronado Stone Products:
    - a. Product Name \_\_\_\_\_
    - b. Color \_\_\_\_\_
    - c. Trim: Corners where applicable
- B. Stone Accessories
  - 1. Provide the following accessory and accent stones:
    - a. Corner of selected product
    - b.  Wall caps \_\_\_\_\_
    - c.  Quoins \_\_\_\_\_
    - d.  Stone Sills \_\_\_\_\_
- C. Setting Accessories:
  - 1. Moisture Barrier:
    - a. Tyvek Stucco Wrap, by E.I. Dupont, or comparable product as approved by Architect Provide tape to seal joints, seams, and tears, of same permeance as membrane
    - b. ASTM D226, no. 15 non-perforated asphalt saturated organic felt
  - 2. Metal Lath: ASTM C847; 18 gauge woven wire or self furring, galvanized, 2.5 or 3.4 metal lath
  - 3. Fasteners: galvanized staples, nails, or screws of size, spacing, and type as recommended by simulated stone manufacturer
- D. Mortar and Grout
  - 1. Materials: Contact your local Coronado manufacturing facility for mortar mixture recommendations.
  - 2. Mortar and Grout Color: \_\_\_\_\_

#### PART 3 EXECUTION

##### 3.1 EXAMINATION AND PREPARATIONS

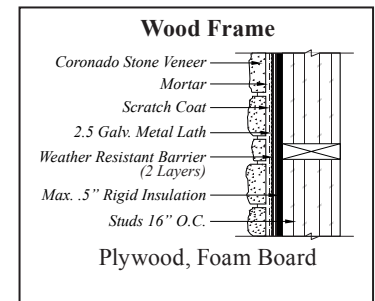
- A. Examination: Examine conditions and proceed with work in accordance with Section 01400
  - 1. Verify that masonry /concrete substrates do not have residual coatings (paint, bond breaker, curing compounds, etc) present which may affect bonding of mortar to the substrate and correct the problem according to manufacturer's specs
  - 2. Protect surrounding work from damage by work in this section
- B. Verify that all receptacles and misc. items (moldings etc.) are acceptable

#### PART 3 EXECUTION (Continued)

- C. Verify that weather conditions for installation period meet manufacturer and project specifications. Under no conditions, install veneer stone under 40° F or when the initial set /adhesion period temperature will drop below 40° F within 48 hours from installation. Keep all products in a clean and dry storage area and temperature will remain above 40° F within 24 hours prior to installation

##### 3.2 INSTALLATION (Adhered Veneer)

- A. Moisture Barrier: Follow manufacturer's installation procedure
- B. Lathing: Apply lathing according to manufactures installation instructions
- C. Apply 3/8 inch scratch coat of mortar to lath and allow a 48 hours drying period. Apply bonding agent to stone in accordance with manufacturer's recommendations
- D. Coronado Stone Veneer: Install in accordance with manufacturer's instructions
  - 1. Pattern: Follow published literature/ pictures of the product specified
    - a. NO VERTICAL STONES
    - b. Horizontal Joints: no longer than 4' to 6' depending on stone
    - c. Vertical Joints: no higher than 6" higher than largest stone



- E. Grout Joints:
    - 1. Stacked \_\_\_\_\_
    - 2. Grouted \_\_\_\_\_
      - a.  Deep Raked  Full Brushed
      - Full Smooth Tooled  Weeping
  - F. Clean and finish joints in accordance with manufacturer's instructions
  - G. Control Joints: Size in accordance with Section 07920 for sealant performance, but in no case larger than adjacent mortar joints in exposed stone units
  - H. Expansion Joints: Provide where indicated on Drawings or as recommended by system manufacturer
- ##### 3.3 CLEANING AND SEALING
- A. Cleaning: Comply with Section 01740.
    - 1. Remove excess mortar and smears using a wire brush or steel wool within 1 to 2 hours of installation
    - 2. No acid cleaners
    - 3. Leave surfaces thoroughly clean and free of mortar and other soiling

Phone: (800) 847-8663 • Fax: (909) 357-7362  
email: [sales@coronado.com](mailto:sales@coronado.com)

[WWW.CORONADO.COM](http://WWW.CORONADO.COM)