

## Installation Specifications

At [www.CORONADO.com](http://www.CORONADO.com) product specifications can be downloaded in CSI format.

### Choices Specific to The Getty Stone

- Standard Colors:** Black Forest, Embassy Blend or Any Custom Color
- Grout Joint Width:** ¼" Grout Joint (nominal)
- Grouting Options:** Full Smooth Tooled
- Grout Joint Color:** Natural Grey, Natural Off-White or Complementary Color
- Accessories:** Corners (3" Short Return, 15" Long Return), Keystones, Trim Stones, Wall Caps, Post Caps and more. (See Accessories section of binder)

### Special Installation Notes

- Pattern:** Do not install stones vertically. Blend the stone on the wall from several different boxes to ensure proper color. *Due to the large profile of the The Getty Stone, Coronado recommends selecting an installer that has previous experience with precast or large tile installations. See catalog photos for recommended installation pattern.*
- Chalk Lines:** Should be used by installer to ensure a straight and level pattern.
- Sealing:** Not required. However, if installed on an exterior exposed to excessive water from runoff or improper drainage, we suggest the product be sealed in that particular area to protect it from staining or spalling during freeze-thaw cycles.
- Freeze-Thaw:** When installing stone in a freeze-thaw environment, extra care should be taken to ensure a full coverage of mortar on the back of each stone, which will prevent water pooling behind the stone after it's been installed.
- Installation Info:** Download Coronado's latest Classic Series installation instructions at [www.coronado.com](http://www.coronado.com) for information on mortar and installation recommendations.

### Profile Properties

- Size:** Stone size is 16" in height and 24" in length (nominal).
- Thickness:** 1" to 1¾" (nominal)
- Weight:** 9 to 12 lbs. per square foot.
- Packaging:** Product sold by the piece.

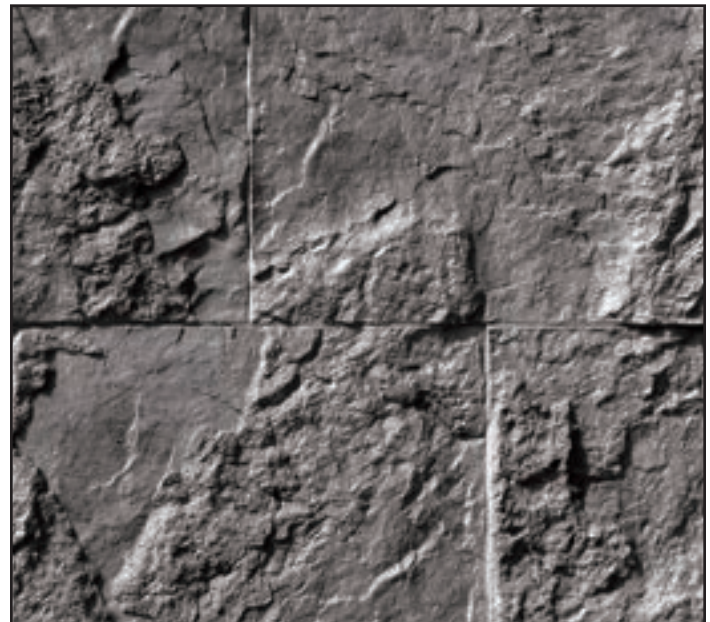
¼" Full Smooth Tooled Grout Joint (nominal)



THE GETTY STONE

COLOR: *EMBASSY BLEND*

¼" Full Smooth Tooled Grout Joint (nominal)



THE GETTY STONE

COLOR: *BLACK FOREST*