

Installation Specifications

At www.CORONADO.com product specifications can be downloaded in CSI format.

Choices Specific to Italian Tile

- Standard Colors:** Buckskin, Burnt Orange, Milano, Mission Red, Saltillo, Tecate Orange, Any Custom Color
- Grout Joint Width:** ½" Grout Joint
- Grouting Options:** Shallow Tooled
- Grout Joint Color:** Natural Grey, Natural Off-White or Complementary Color
- Accessories:** Bullnose and Double Bullnose.

Special Installation Notes

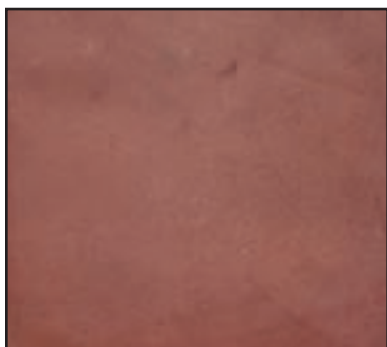
- Pattern:** Blend the tile on the floor from several different boxes to ensure proper color and size variation. **See catalog photos for recommended installation pattern.**
- Sealing:** Sealing concrete floor tile protects it from staining and helps preserve its original appearance. All tile including presealed tile, must have a finish coat of sealer after the entire installation is dry (including joints). Tests should be performed with the sealer in an obscure location to ensure it will achieve the proper look. Follow manufactures specifications for application of sealer.
- Freeze-Thaw:** Coronado Stone floor tile products are not intended nor warranted for use as exterior flooring in freeze thaw climates where temperatures regularly fall below 32 degrees Fahrenheit as regular cycles of snow and/or ice can damage cement based products in horizontal applications. De-icing agents are not recommended for use on cement products may damage the product.
- Application:** Coronado Stone floor tile products are intended for use as interior and exterior flooring in residential and light commercial applications. These products are not intended for commercial applications with heavy traffic such as forklifts or shopping carts.
- Installation Info:** Download Coronado's latest installation instructions at www.coronado.com.

Profile Properties

- Size:** 12" x 12" or 18" x 18" (nominal).
- Thickness:** ¾"
- Weight:** 7 to 10 lbs. per square foot.
- Packaging:** 12" x 12" tiles available in small boxes (10 square feet) and 18" x 18" tiles available in small boxes (11.5 square feet). **When purchasing Italian Tile, coverage is based on installation with a ½" joints.**



COLOR: BUCKSKIN



COLOR: MISSION RED



ITALIAN TILE

COLOR: SALTILLO